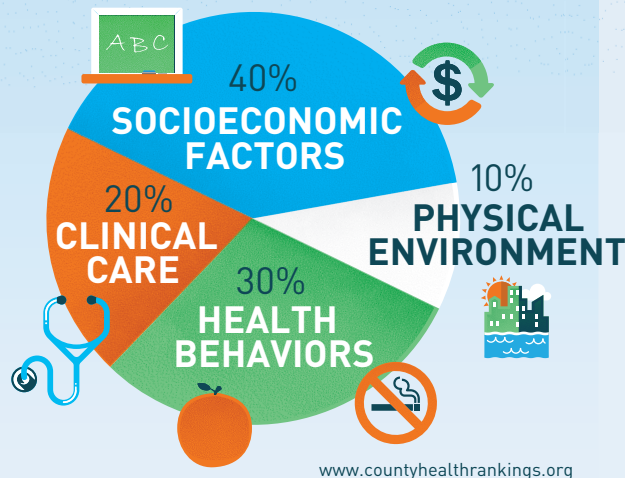


INVEST IN YOUR COMMUNITY

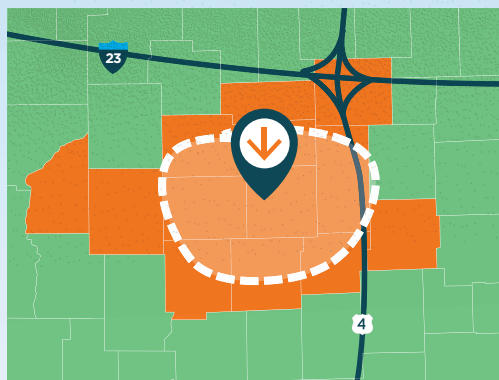
4 Considerations to Improve Health & Well-Being *for All*

WHAT Know What Affects Health



WHERE Focus on Areas of Greatest Need

Your zip code can be more important than your genetic code. Profound health disparities exist depending on where you live.



WHO Collaborate with Others to Maximize Efforts



HOW Use a Balanced Portfolio of Interventions for Greatest Impact

- Action in one area may produce positive outcomes in another.
- Start by using interventions that work across all four action areas.
- Over time, increase investment in socioeconomic factors for the greatest impact on health and well-being for all.

Four ACTION Areas

